

KOKI SUGITA



KOKI SUGITA

Koki Sugita was born in Miyazaki, Japan in 1983. He studied about Electrical and Electronic Engineering at Kagoshima University. He lives in Fukuoka, Japan, works around the world. His artworks is in numerous collections including the Leepa-Rattner Museum of Art, Hilton Worldwide, Van Cleef & Arpels, and more. He performed G20 & G20YEA Summit.

STATEMENT

"Life" and "Death" seem to be opposites yet inextricably linked. Sugita express artwork, "the beauty of the connection between opposites".

It all began with the question, "What is death?" and "What is life?"

At the age of 19, Sugita face myself with "death" after encountering two suicides within a week.

Furthermore, At the age of 20, he discovered that he was not related to his father, he began to grope for his "life (roots)".

As he continued his groping, he met an African woman who was determined to live even though her parents and relatives had been slaughtered in war, and who supported boy and girl soldiers as an NGO worker. From that encounter, his world expands from the scale of his immediate surroundings to explore war and peace, human history, culture and civilization, aesthetics and philosophy.

He was exposed to life and death, philosophy, and aesthetics from around the world, and the questions "What is death?" and "What is life?" led him to art.

Sugita has been working as a calligrapher in Japan and abroad for 17 years while studying Eastern thought and art. He continues to create calligraphy, believing that the act of writing itself is art.

At the same time, he also studies Western art and Asian and African cultures, and has produced many works of art that differ from the expression of calligraphy. His works express "the beauty of the connection between opposites," which he arrived at through his exploration of life and death, and he has created a series of works that focus on the diversifying contemporary society and social issues.

Sugita's work is also the antithesis of an extreme bias toward one direction of thought or the other. Through his creations, he will continue to explore the "beauty of moderation (Mesotes)".



THE PRESENCE series

The concept of this series was born when he was holed up in a calligraphy undertaking at Koyasan's temple. The temple had a well called "Sugatami no well," where it is said that the monk Honen and the monk Shinran saw themselves reflected in the water during their ascetic practices. "The Presence Series" is constructed from the perspective of "Seeing oneself reflected in the surface of water". The surface of the work "The Presence" is a blurred and distorted world. It is beautiful, soothing and enriching to the viewer's mind. This has something in common with today's Internet society. When people see a world where digital processing is the norm, they are healed and think of richness. Is it really affluence that modern society reflects? Such questions about the modern world also exist in the background of the works.

The message of "the Presence series" is that no matter what kind of society we live in, "the world is still beautiful".

The Presence, 2022

**Stainless
W150 x H150 cm
Private Collection**



Baika no en -The Presence-, 2021

Stainless

W 800 x H 300 x D 500 cm

Public Collection



The Presence, 2020

Stainless
W120 x H120 cm



The Presence, 2020

Stainless
W76 x H76 cm





THE METAVERSE series

The Metaverse refers to three-dimensional virtual spaces and their services built within computers and computer networks. It is said that the metaverse will become a 100 trillion yen market, and major companies are currently competing for the land in the virtual space. We can imagine that the metaverse will increasingly penetrate the general public and the world will be connected on virtual space.

In the not-too-distant future, some people will have the illusion of not being able to distinguish between reality and virtual space. In virtual space, it is possible to lose sight of oneself when immersed in it. I am creating this series of works as a "device for a bird's eye view of virtual space" for future generations who will see such a metaverse as a world.

Incorporating Zen-like elements, I create works with a mystical view of the world of Eastern thought.

The Metaverse, 2022

Japanese Ink on Paper
W 42 x H 29.7 cm



The Metaverse, 2022

Japanese Ink on Paper
W 42 x H 29.7 cm



The Metaverse, 2022

**Japanese Ink on Paper
W 42 x H 29.7 cm**



The Metaverse, 2022

Japanese Ink on Paper
W 42 x H 29.7 cm



The Metaverse, 2022

**Japanese Ink on Paper
W 42 x H 29.7 cm**





THE INTERVAL series

The Interval refers to an interval of time or place.

What exists at the boundaries between "ma" in the eyes of Japanese culture, yin and yang, borders, light and darkness, past and present, present and future, sky and earth, sky and sea, space and planets, galaxy and universe, East and West, death and life, ego and unconsciousness, war and peace, etc.?

In the Interval Series, the "beauty" that exists at the boundaries of these boundaries is made into works of art.

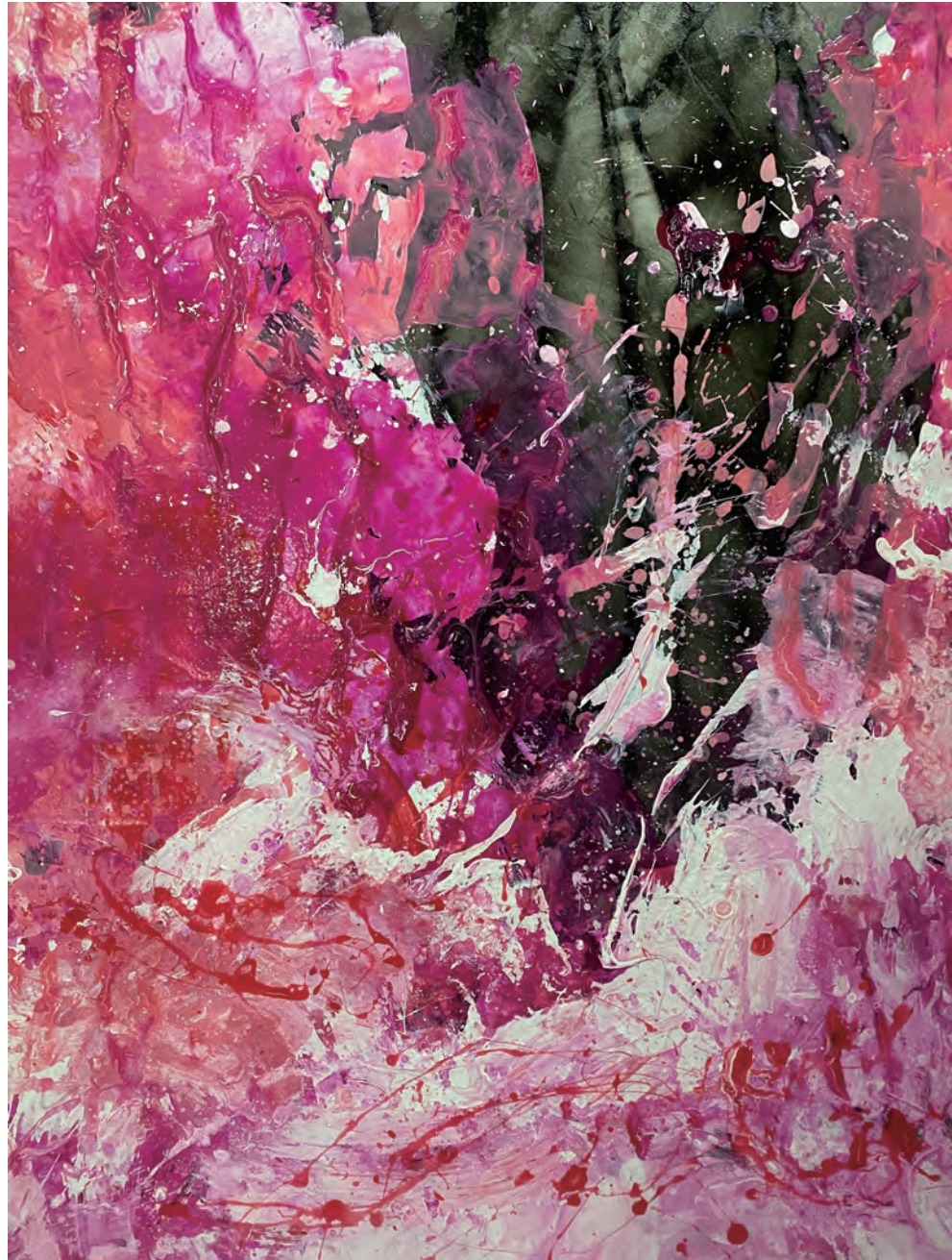
The Interval, 2022

**Mixedmedia on Paper
W 91 x H 116.7 cm / F50**



The Interval, 2022

**Mixedmedia on Paper
W 91 x H 116.7 cm / F50**



The Interval, 2022

**Mixedmedia on Paper
W 27.3 x H 27.3 cm / S3**



The Interval, 2022

**Mixedmedia on Paper
W 27.3 x H 27.3 cm / S3**



The Border, 2021

**Mixedmedia on Paper
W 91 x H 116.7 cm / F50**



The Border, 2021

**Mixedmedia on Paper
W 91 x H 116.7 cm / F50**





THE LOVERS series

The Lovers is a series that explores "What is love?".

Love affects people, for better or worse. Love is a factor in happiness and joy, and love is also a factor in conflict and hatred.

There is love that overflows when we realize we are about to die, and there is love that overflows to our unborn children.

The Lovers series explores this love.

Sugita himself, having been raised by an unrelated father, wonders if he was loved when he was born. What kind of love did they have for their unrelated children? There was a time when I was troubled by this question.

This is the reason why I focus on "love" that people encounter before they live and die.

I love you, 2019

**Mixedmedia on Panel
W 74 x H 74 cm**



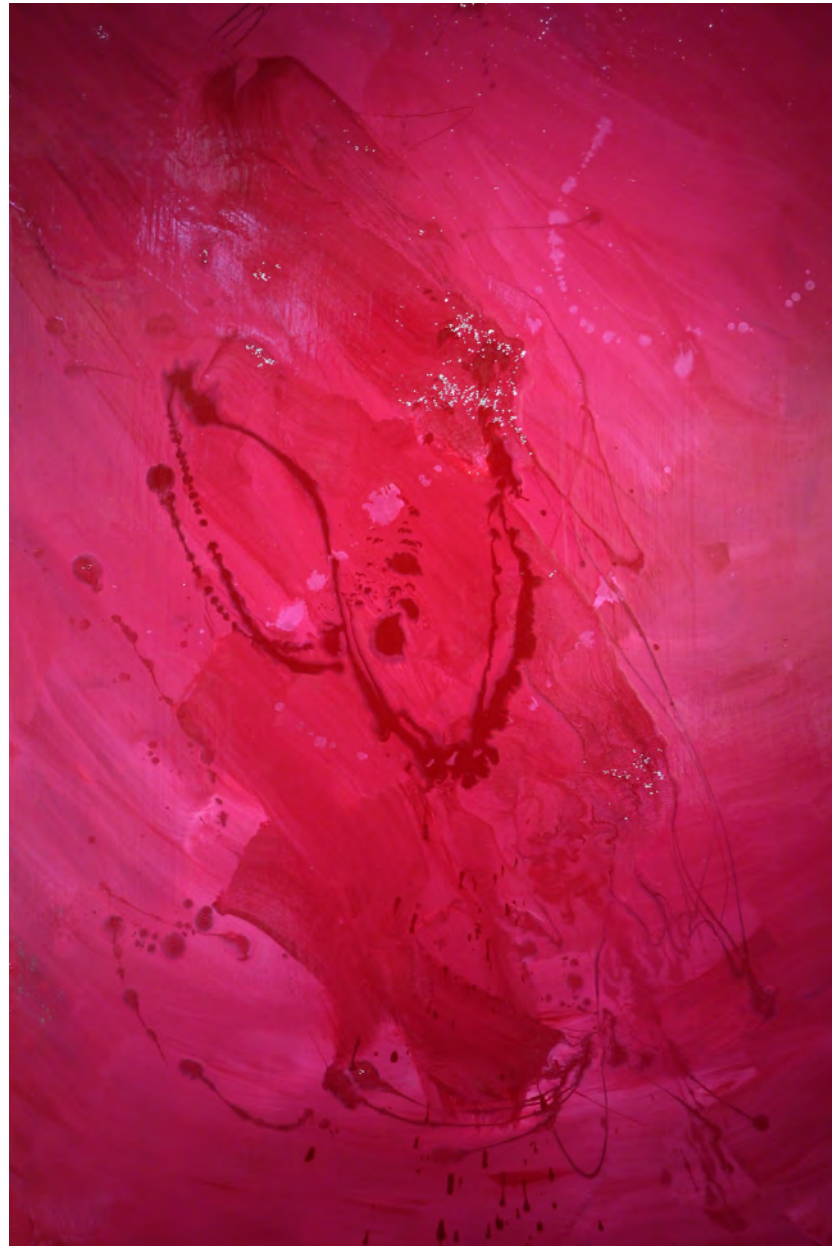
I love you, 2019

**Mixedmedia on Panel
W 58 x H 58 cm
Private Collection**



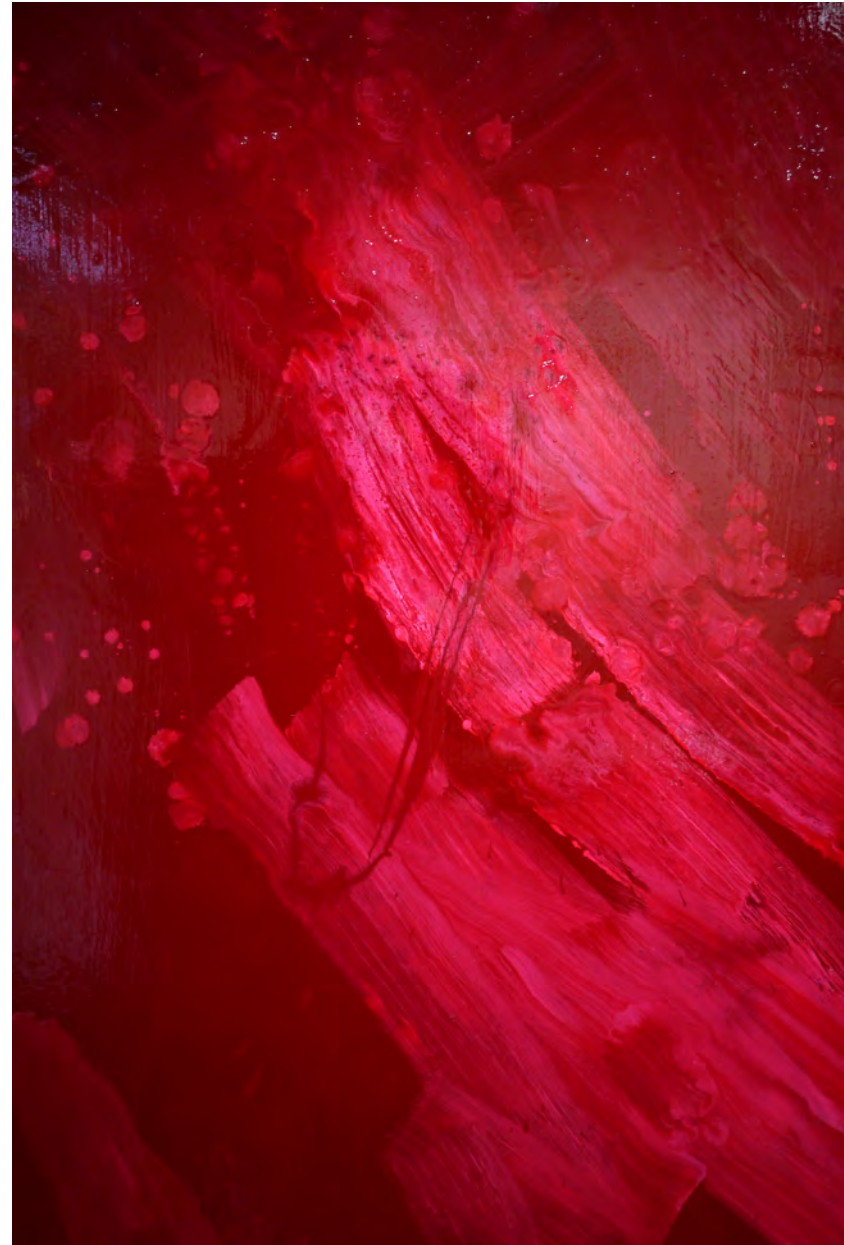
KISS, 2019

**Mixedmedia on Panel
W 65.2 x H 100 cm
Private Collection**



Love does not dominate; it cultivates., 2019

**Mixedmedia on Panel
W 65.2 x H 100 cm
Private Collection**



Passion, 2019

**Mixedmedia on Panel
W 65.2 x H 100 cm**



The symbol of love, 2019

Mixedmedia on Panel
W 27.3 x H 22cm



The symbol of love, 2019

Mixedmedia on Panel
W 22.7 x H 15.8 cm



CONTACT

MAIL: kokisugita8@gmail.com



fb.com/KokiSugita



@koki_sugita



KOKI SUGITA



<https://kokisugita.com/>